

**Brickcom**

# **NVR- Play Back**

FAE Team

2012.3

# Agenda

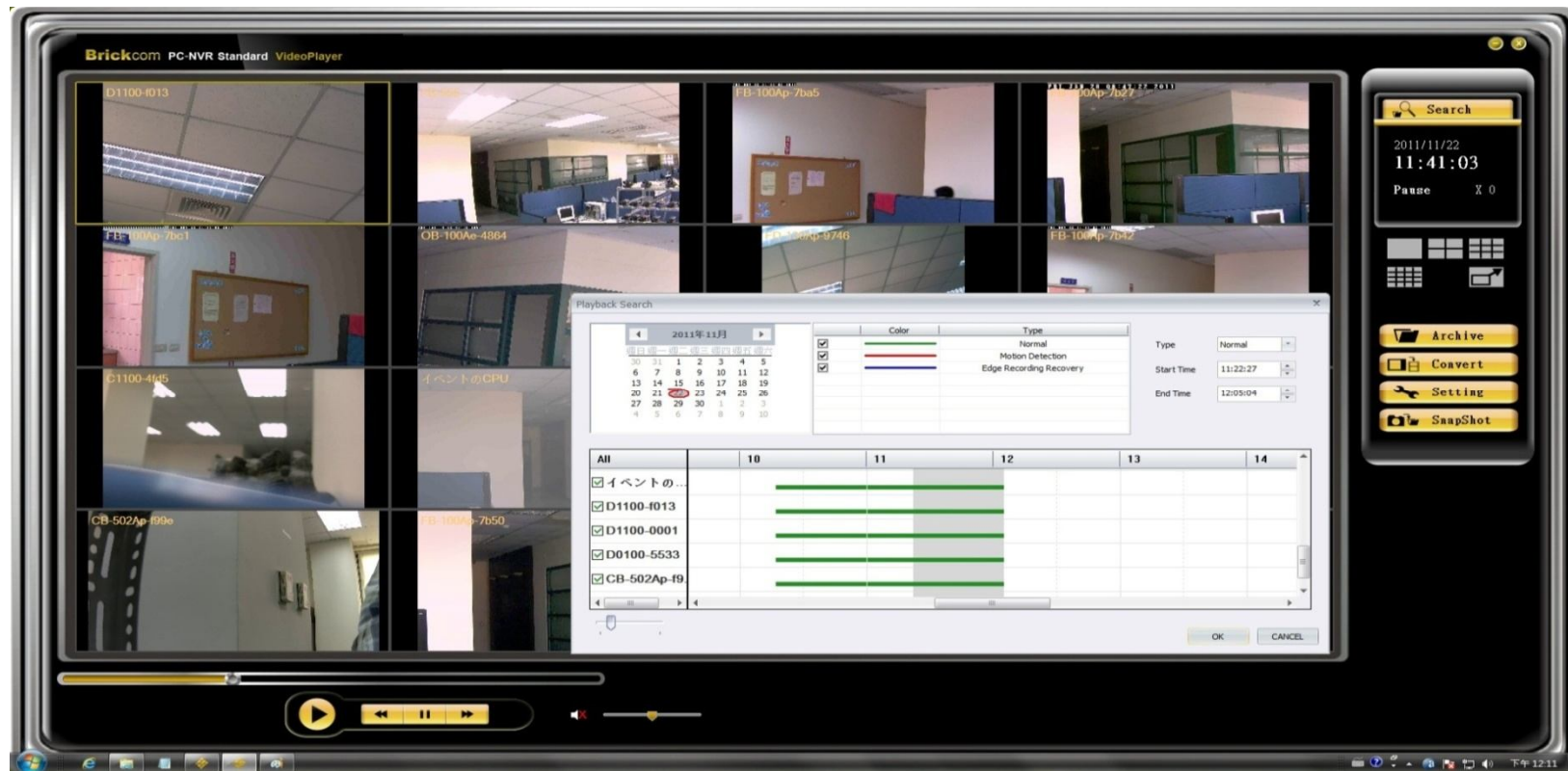


## Play Back Introduction

---

# NVR - Play Back

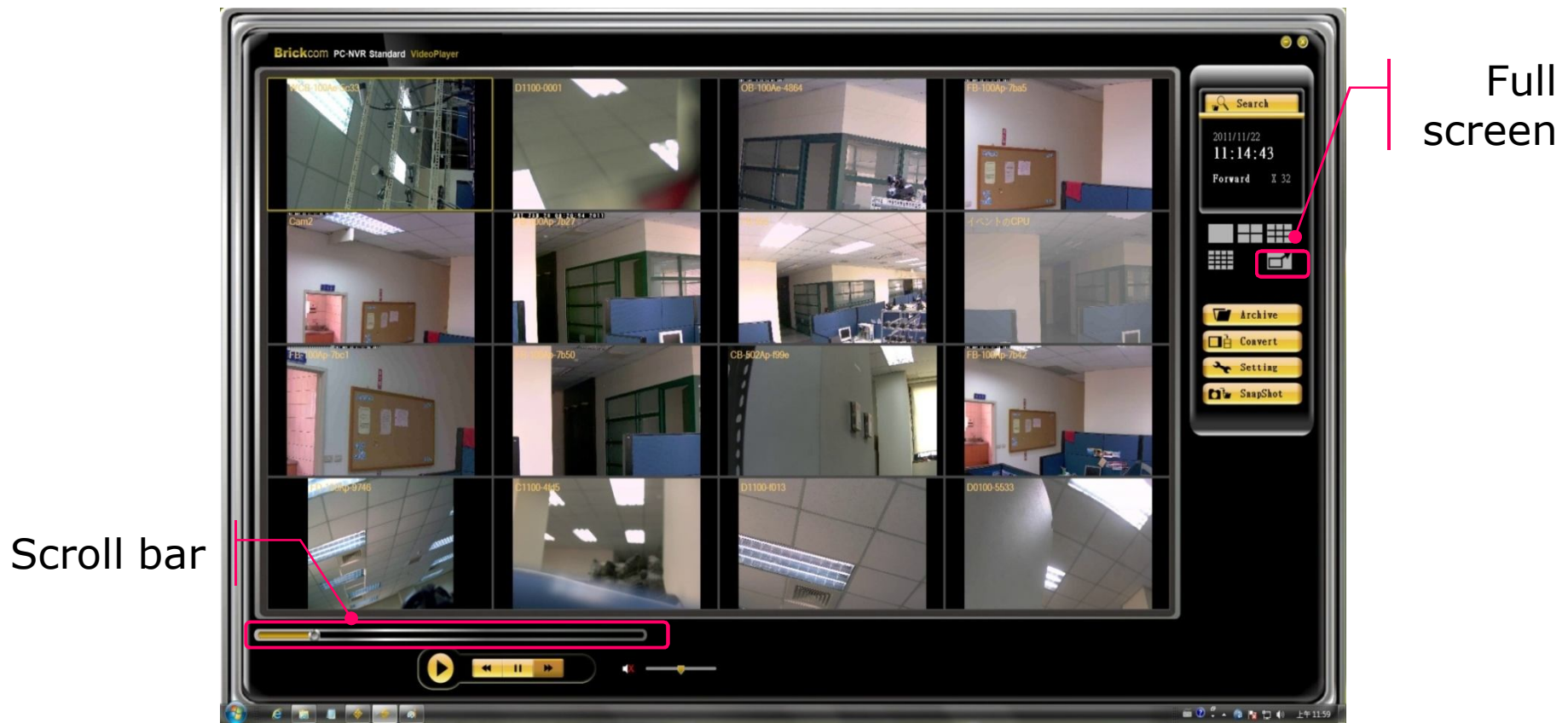
**Play Back:** Watch the recorded video, view and/or search for unusual events and recorded system information. Sync-Playback 16 cameras video simultaneously.



# NVR - Play Back

**Full screen:** Enables user to watch the playback console in full screen.

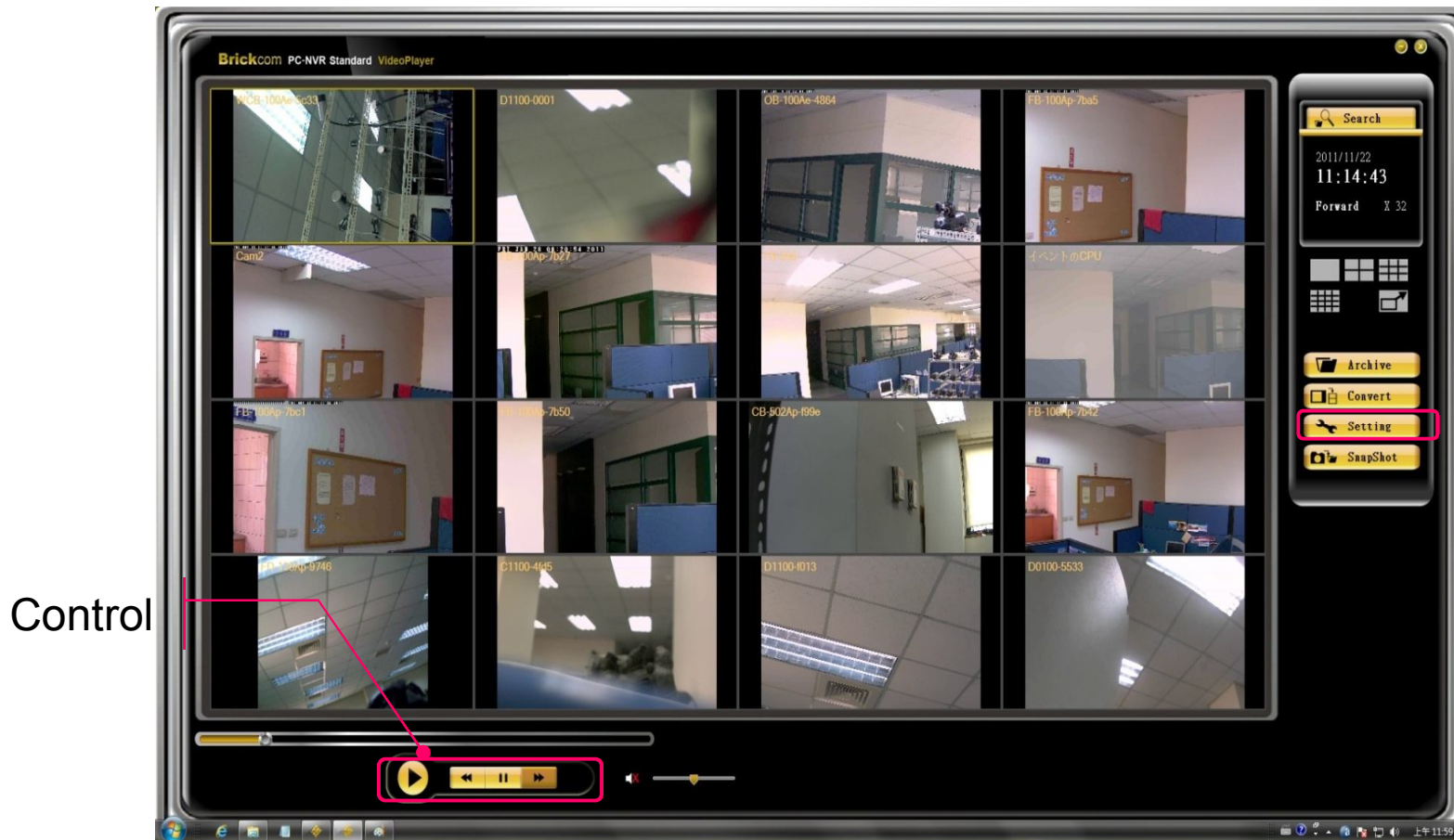
**Scroll bar:** Indicates the status of the playing video.



# NVR - Play Back

**Control:** FWD, RWD, Play, pause and stops the video.

**Setting:** Changes camera OSD, file path, and Snapshot type.

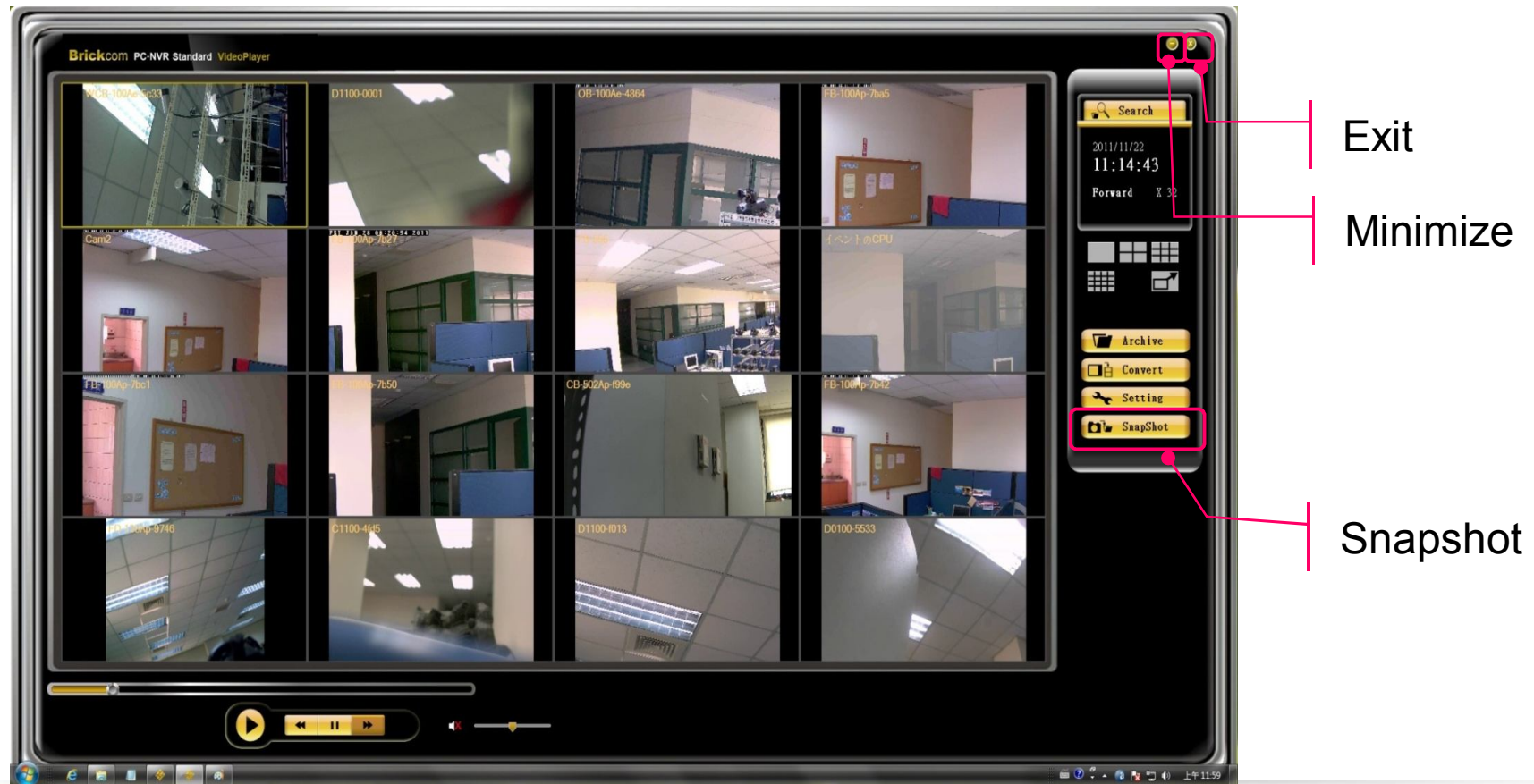


# NVR - Play Back

**Snapshot:** Captures a specific video image immediately.

**Minimize:** Minimizes the Playback console.

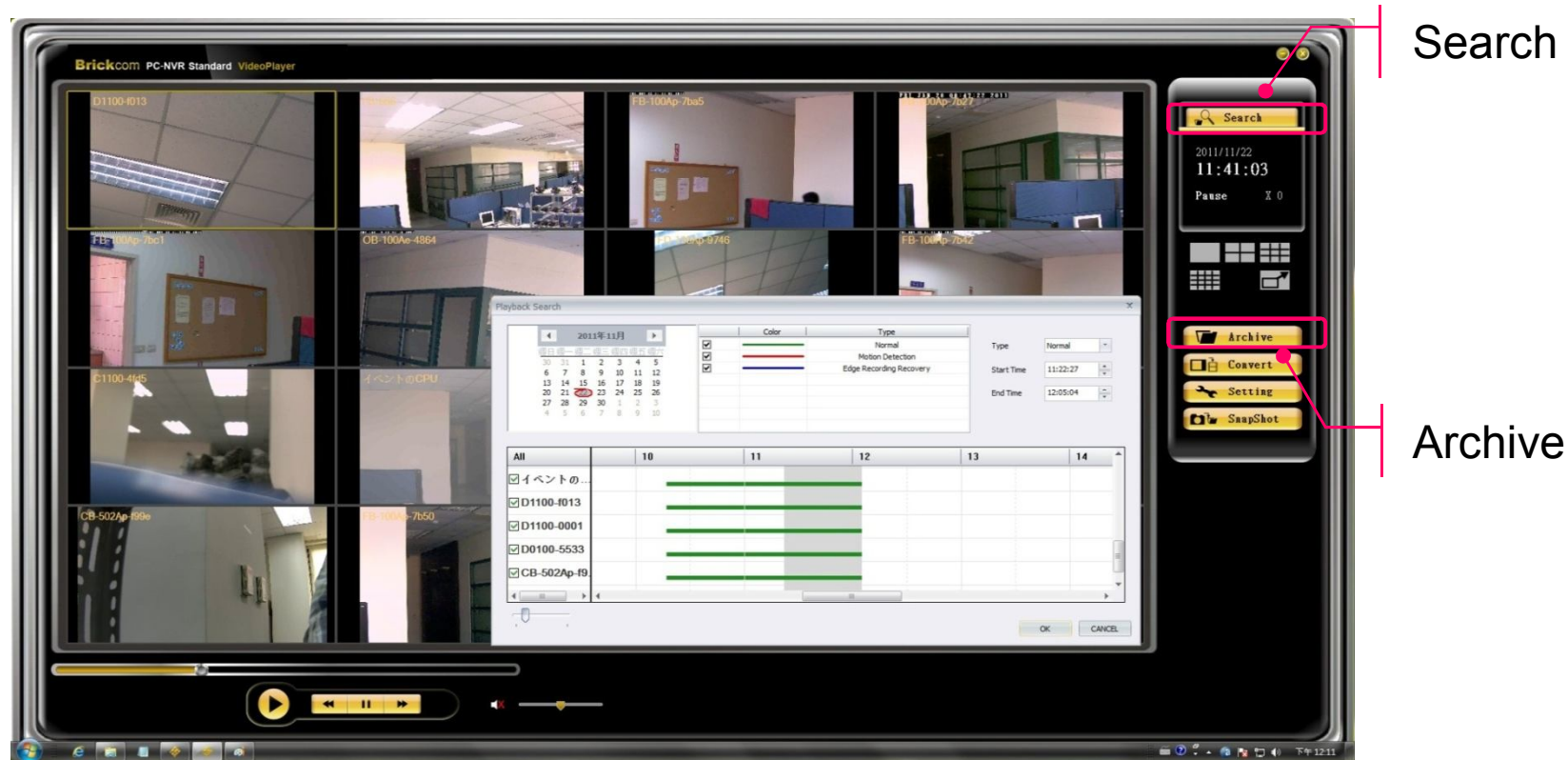
**Exit:** Shuts down the Playback console.



# NVR - Play Back

**Search:** Open time table of each camera on Calendar to search video clip.

**Archive:** Accesses the Playback Search and withdraws the recorded video that you want to review.



# NVR - Play Back

Video record data search and preview

The screenshot shows the 'Playback Search' window. At the top left is a calendar for September 2011. In the center is a video preview window showing a scene with trees and a timestamp of 2011/09/13 09:59:46. To the right of the preview is a table with search filters:

Color	Type
<input checked="" type="checkbox"/>	Normal
<input checked="" type="checkbox"/>	Motion Detection
<input checked="" type="checkbox"/>	Edge Recording Recovery

Further right are time selection controls: Type (Motion Detectic), Start Time (09:57:29), and End Time (10:01:06). A red box highlights the Start and End Time fields, with the text 'Input Start & End time' written in red below them.

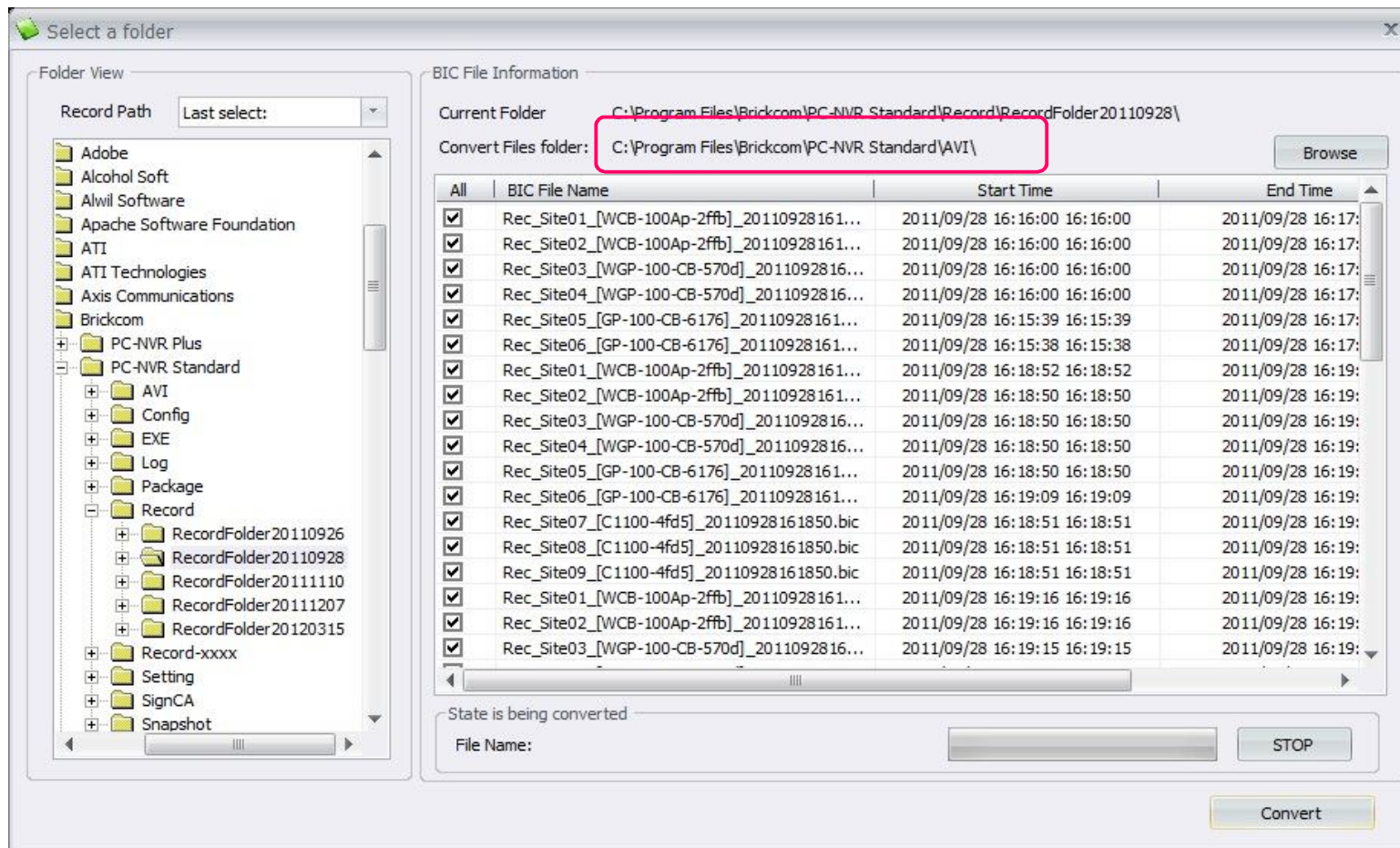
Below these controls is a timeline view with a list of camera channels on the left: All, 10, and 11. The list includes checkboxes for 4746, 4746, CB-101Ap-5, WCB-100Ap, and WCB-100Ap. A red vertical bar on the timeline indicates the search range, with a black arrow pointing to it. A red box highlights the timeline range selection controls at the bottom left, with the text 'Modify the range of timeline' written in red below them.

At the bottom right are 'OK' and 'CANCEL' buttons.



# NVR - Play Back

**Convert To AVI:** Covert video files to AVI format

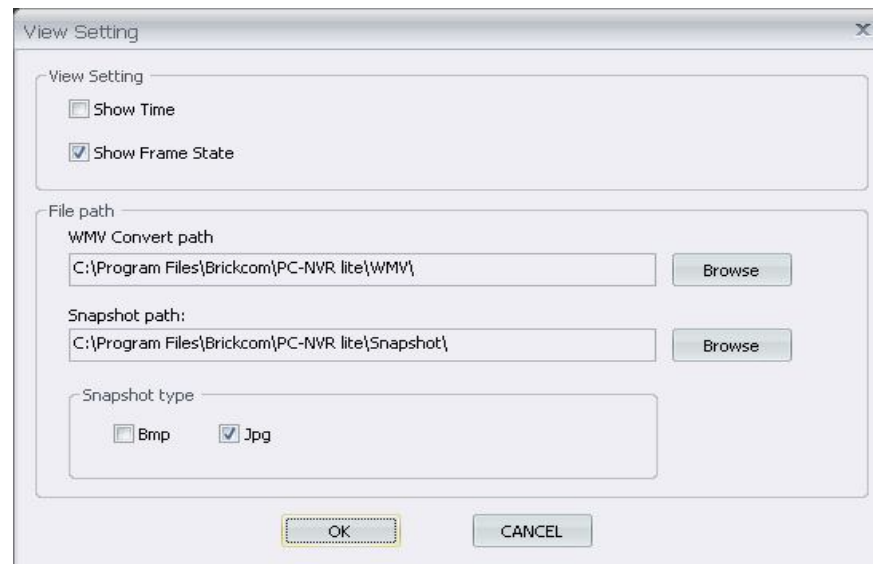


# NVR - Play Back

**View Setting:** Enable the Camera's OSD to display video information on recording video. Information includes: camera name, date and time.

**File path:** Manually select where you want save the image.

**Snapshot type:** Choose a format to save your image as.



# Contact Us

## Brickcom Corporation Headquarters

Address	No.1 Jen Ai Rd, Hsinchu Industrial Park, Hukou, Hsinchu, Taiwan, R.O.C. 303
Tel	+886-3-5982022
Fax	+886-3-5982023
Website	<a href="http://www.brickcom.com">http://www.brickcom.com</a>
Sales & Marketing	<a href="mailto:info@brickcom.com">info@brickcom.com</a>
Support	<a href="mailto:support@brickcom.com">support@brickcom.com</a>

Brickcom, your best partner.

# Thank You



© Brickcom Technology Inc., All Rights Reserved. This document is for planning purposes only, and is not intended to modify or supplement any specifications or warranties relating to products of Brickcom Technology. Brickcom may make changes to specifications and descriptions at any time, without notice.

**Brickcom**