

Brickcom

NVR- Live view

FAE Team

2012.3

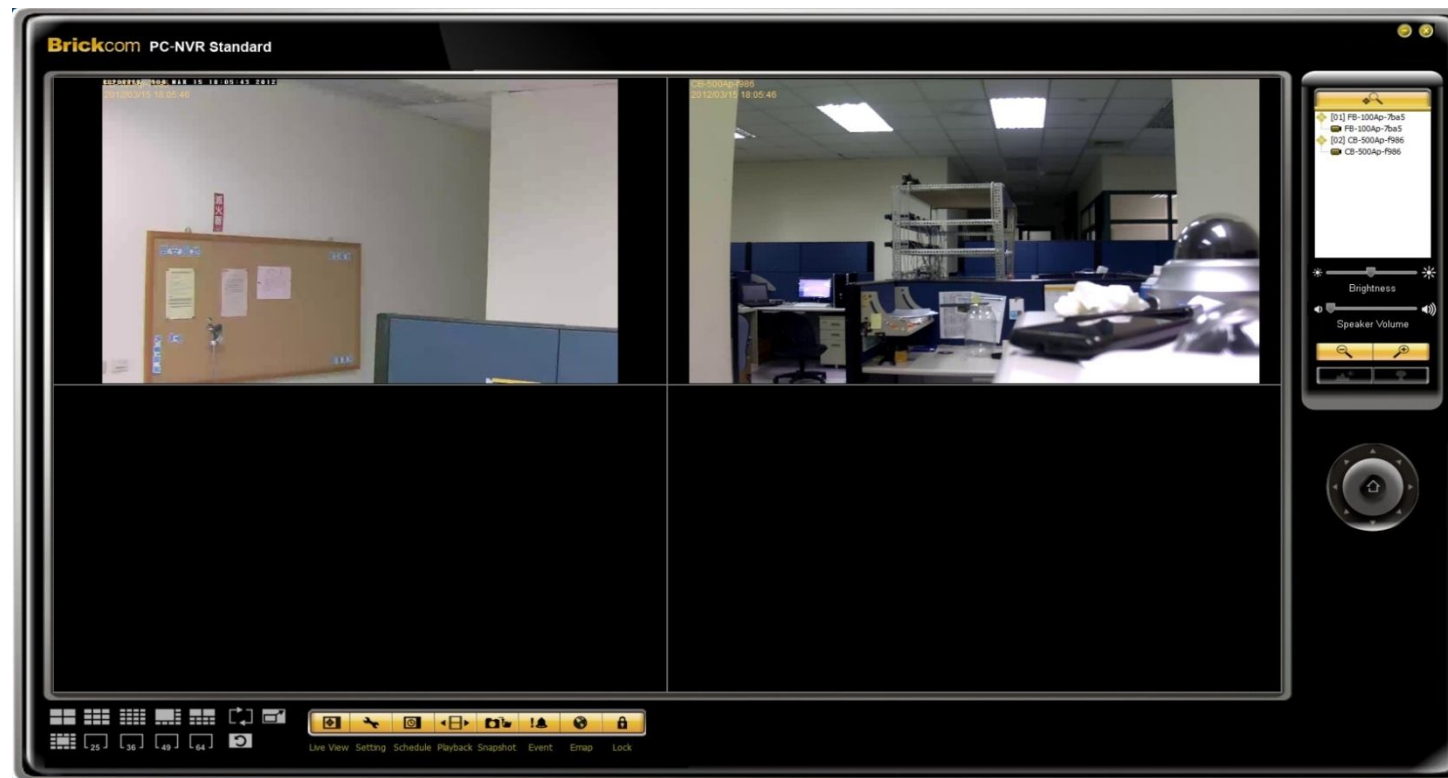
Agenda



Main Console

NVR– Live View

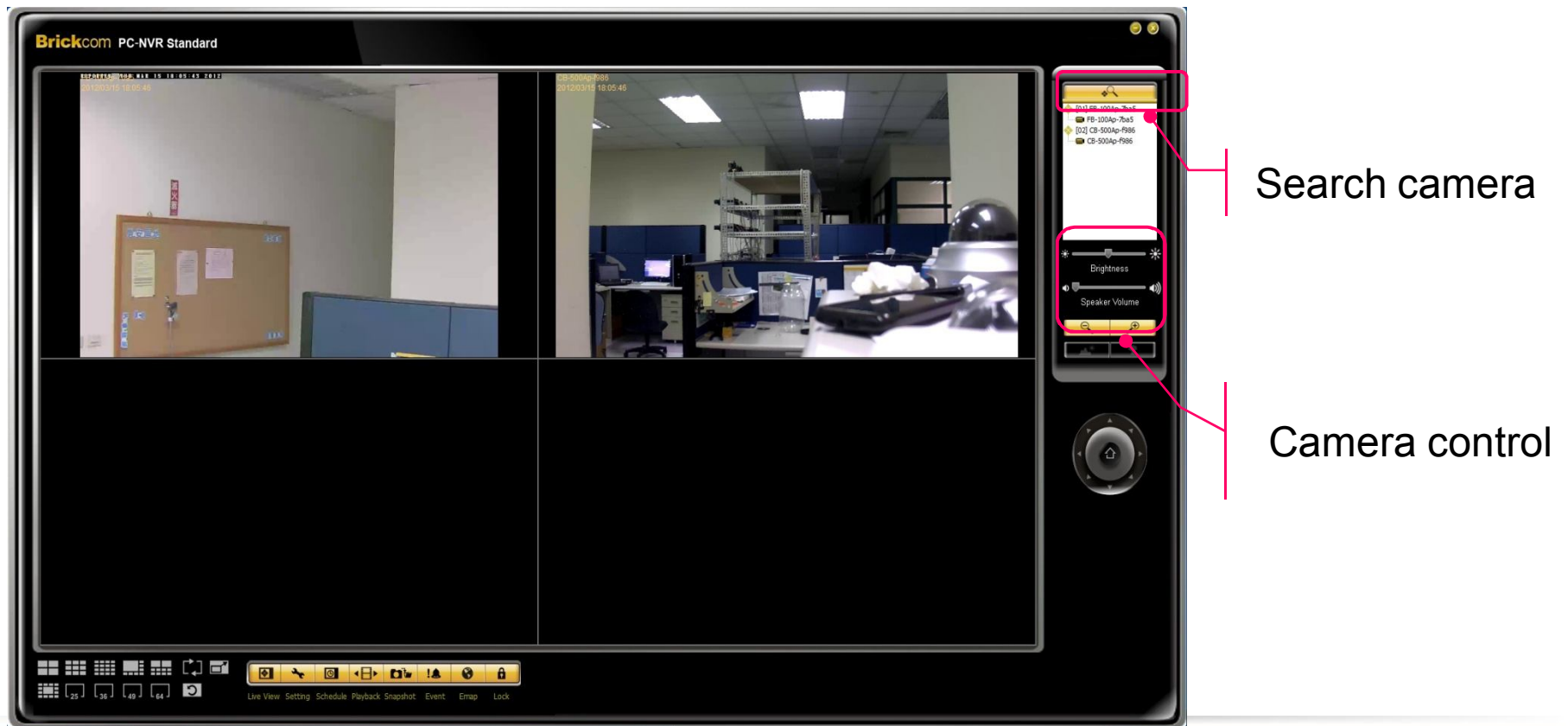
Main Console: This is the main operation system and it is used to activate and schedule recording as well as configure system settings.



NVR- Live View

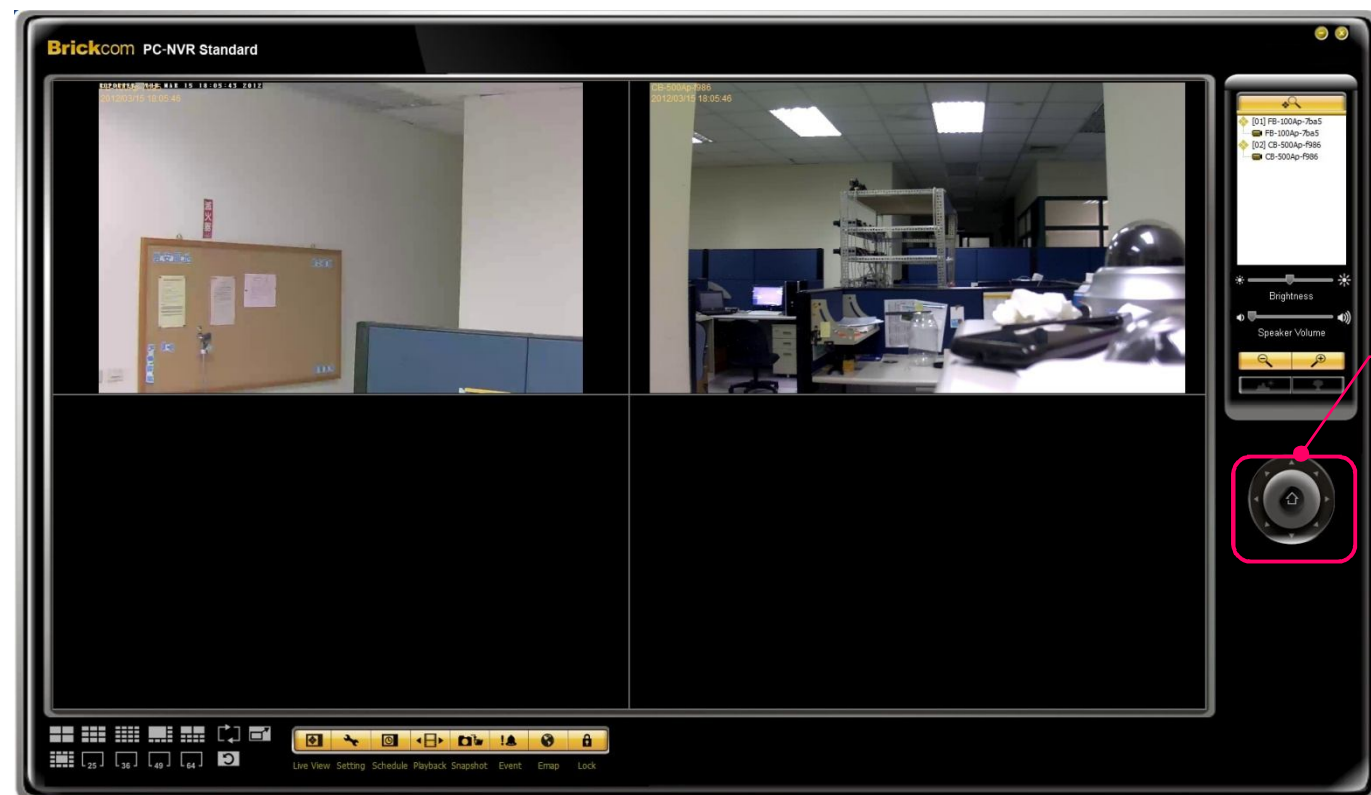
Search Camera: Search for camera to add.

Camera Control: Control audio, brightness, zoom in and zoom out.



NVR– Live View

PTZ Camera Control: Controls the movement of PTZ cameras. With cameras that support PTZ control, you can move, zoom, patrol, adjust the focus, and set preset points.

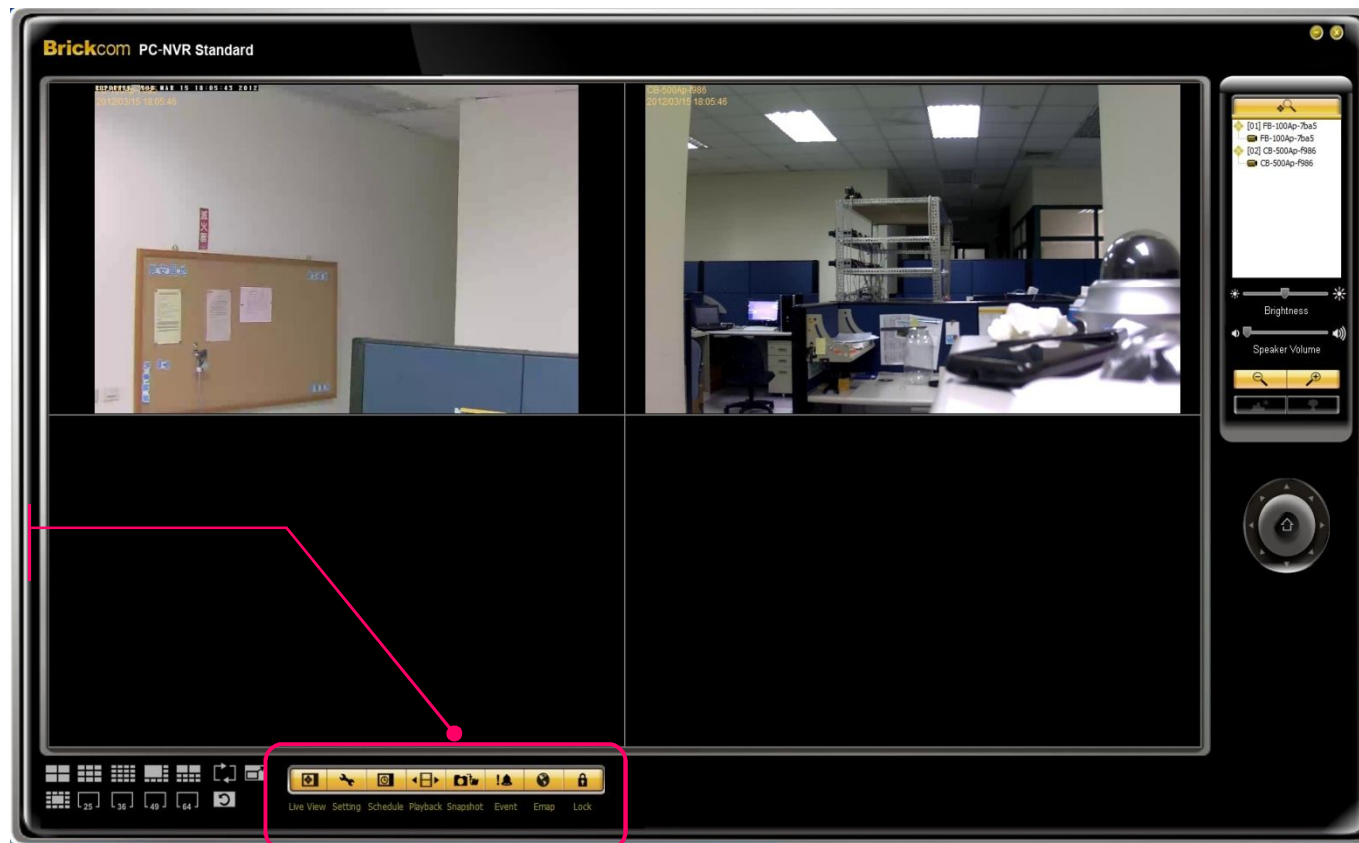


PTZ Camera Control

NVR- Live View

Main Control: Includes LiveView, Setting, Schedule record, Playback, Event, Snapshot, Emap and Lock.

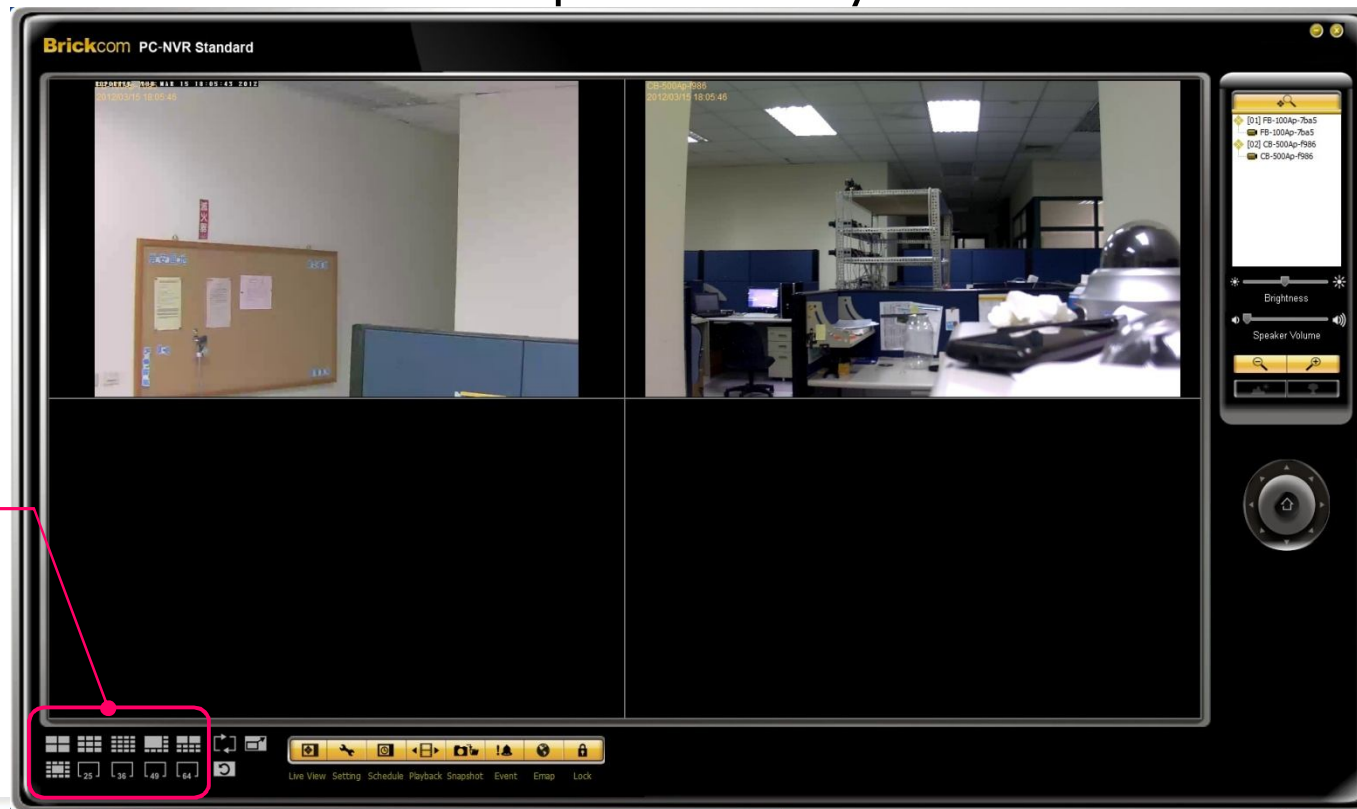
Main Setting



NVR – Live View

Monitoring Mode: Allocate the sub-screen display by clicking on the desired layout icon. To switch to a single camera display, double click on a particular sub-screen. Double click on the screen to revisit the previous layout.

Monitoring
Mode



Contact Us

Brickcom Corporation Headquarters

Address	No.1 Jen Ai Rd, Hsinchu Industrial Park, Hukou, Hsinchu, Taiwan, R.O.C. 303
Tel	+886-3-5982022
Fax	+886-3-5982023
Website	http://www.brickcom.com
Sales & Marketing	info@brickcom.com
Support	support@brickcom.com

Brickcom, your best partner.

Thank You



© Brickcom Technology Inc., All Rights Reserved. This document is for planning purposes only, and is not intended to modify or supplement any specifications or warranties relating to products of Brickcom Technology. Brickcom may make changes to specifications and descriptions at any time, without notice.

Brickcom