

Brickcom

Using EasyConfig

FAE Team

2011.8

Using EasyConfig

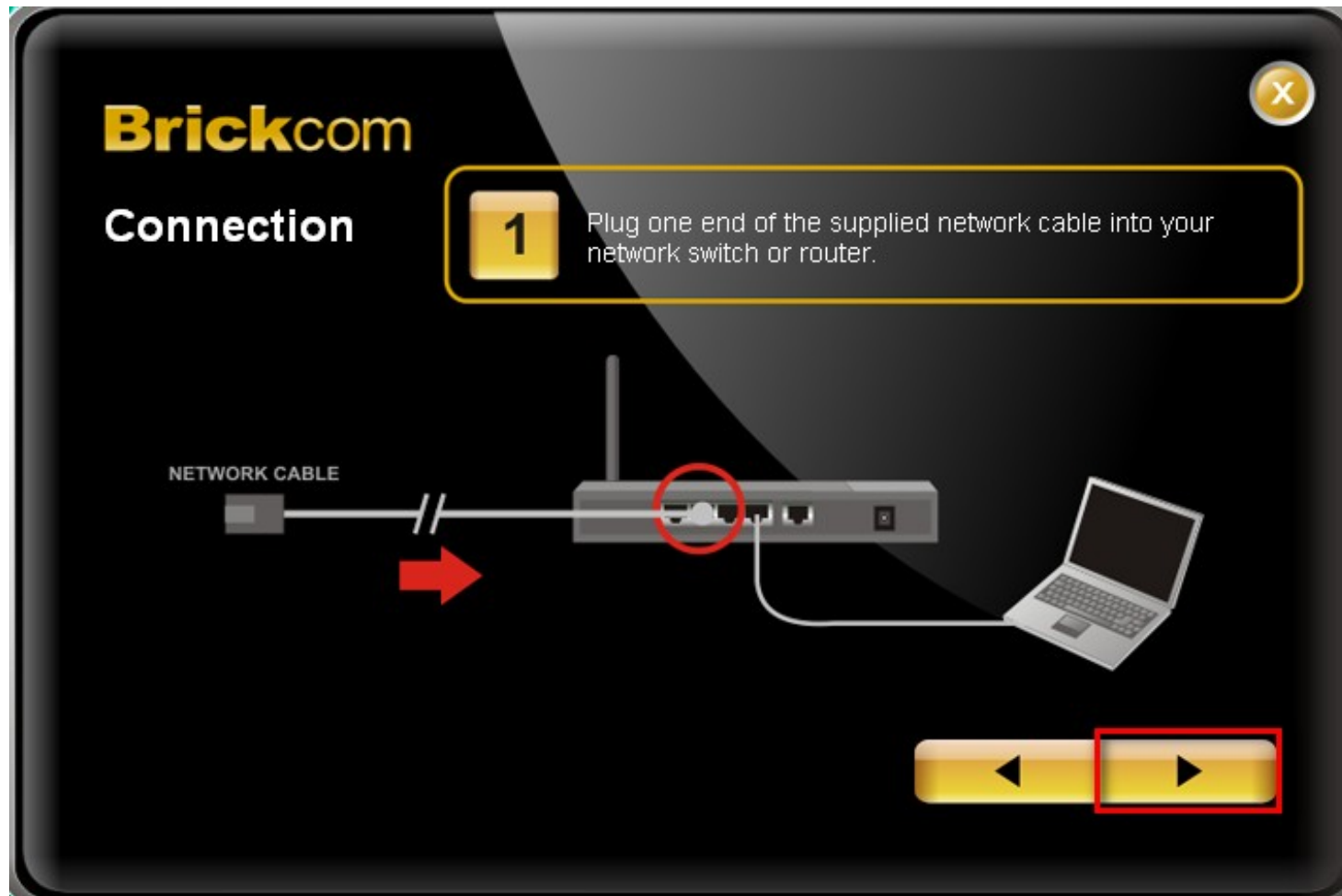
1. Double click the EasyConfig icon on local PC. If desired, user can check the box to skip the hardware installation guide and select the desired language. Click “Start” to continue.

Note: If user has skipped the hardware installation guide, proceed to step three.



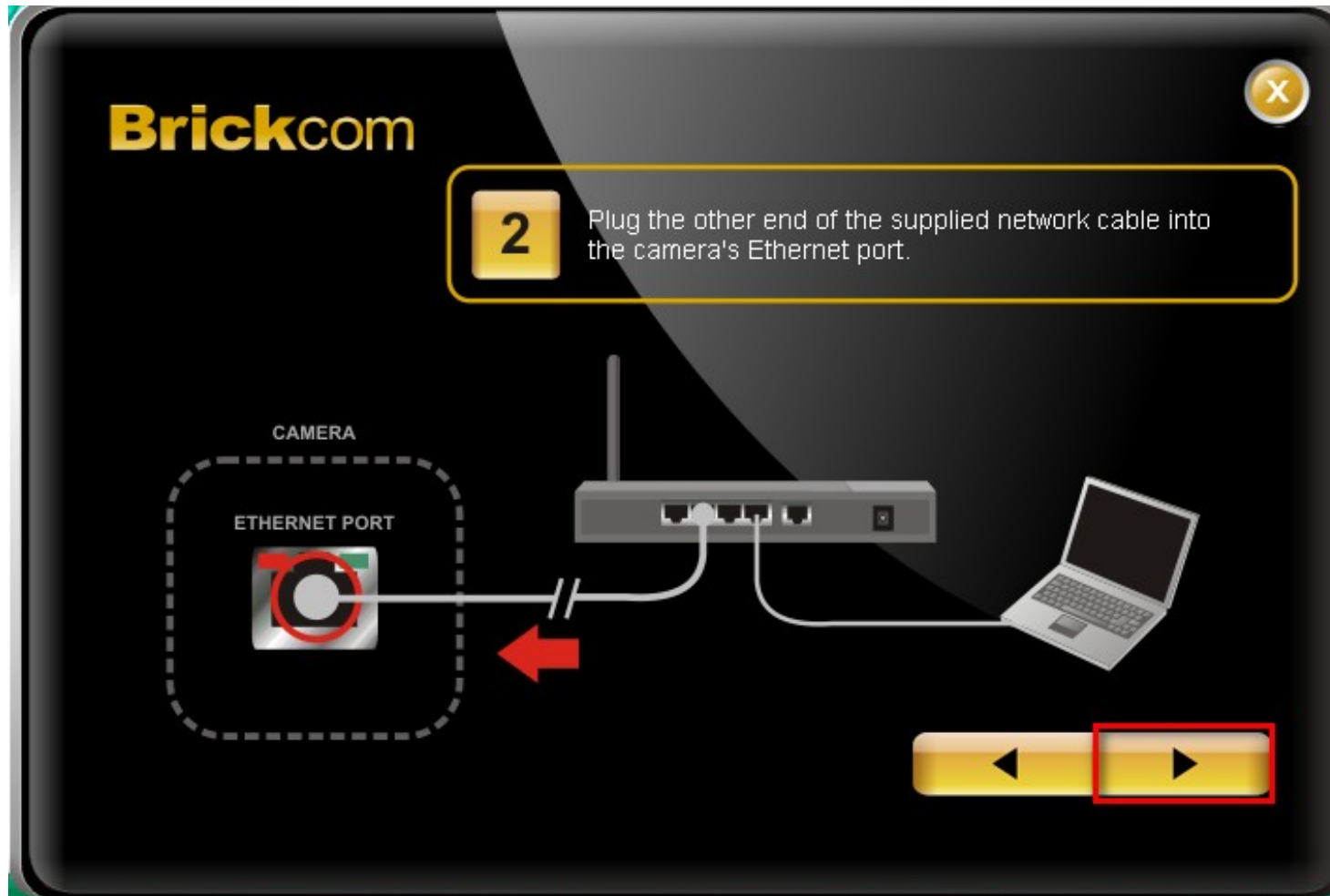
Using EasyConfig

2A. The Hardware Installation Guide will appear. Perform the first step as demonstrated. Once complete, click the arrow to continue.



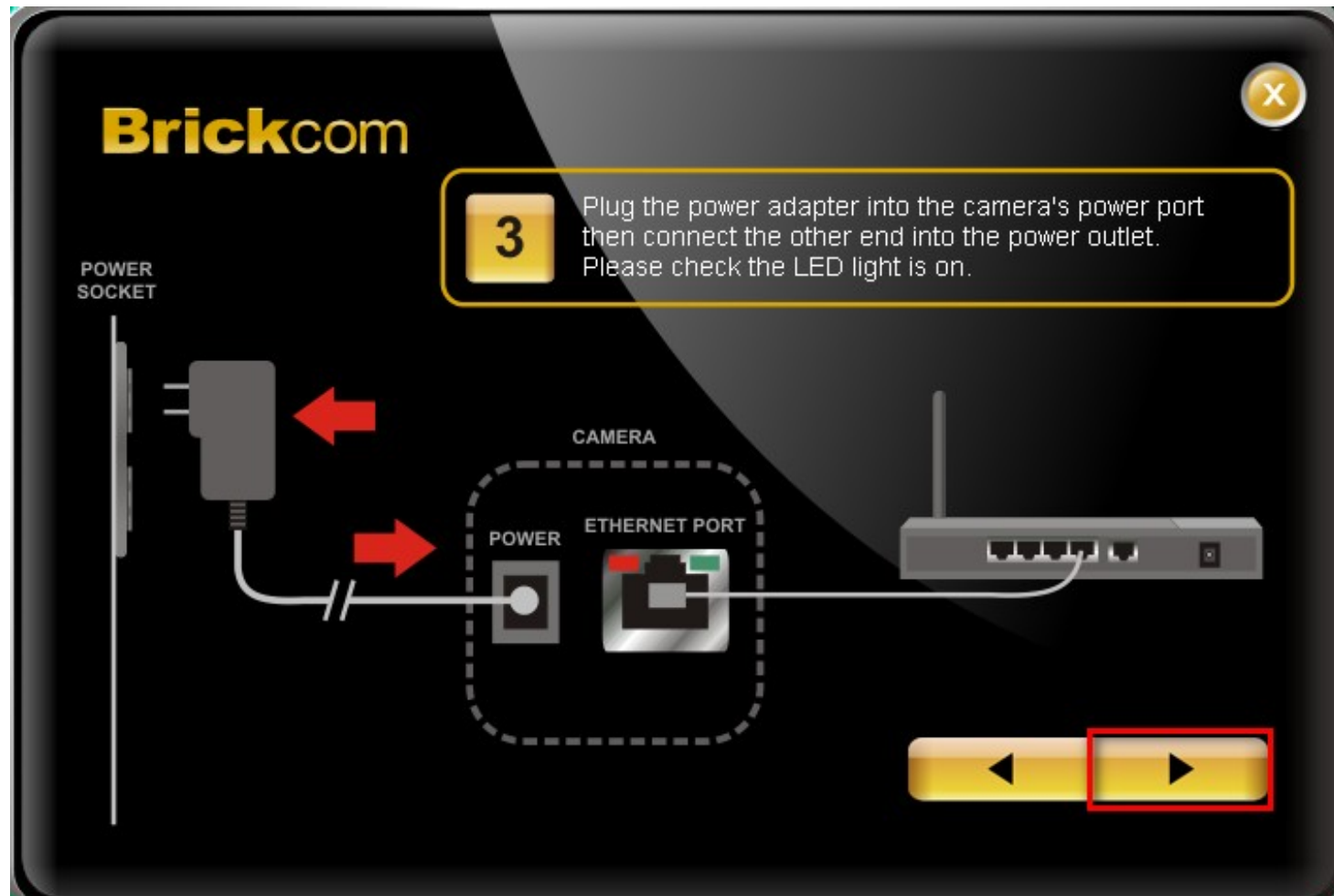
Using EasyConfig

2B. Perform the second step as demonstrated. Once complete, click the arrow to continue.



Using EasyConfig

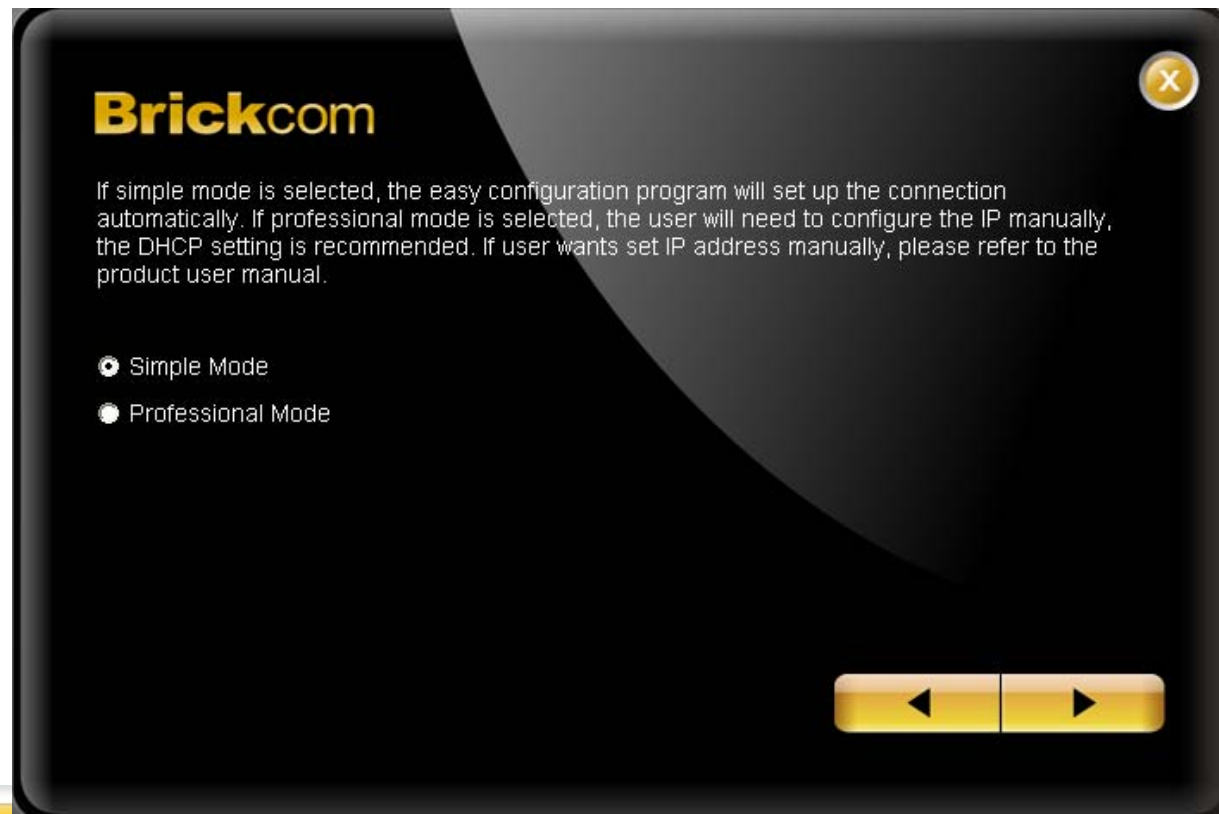
2C. Perform the third step as demonstrated. Once complete, click the arrow to continue.



Using EasyConfig

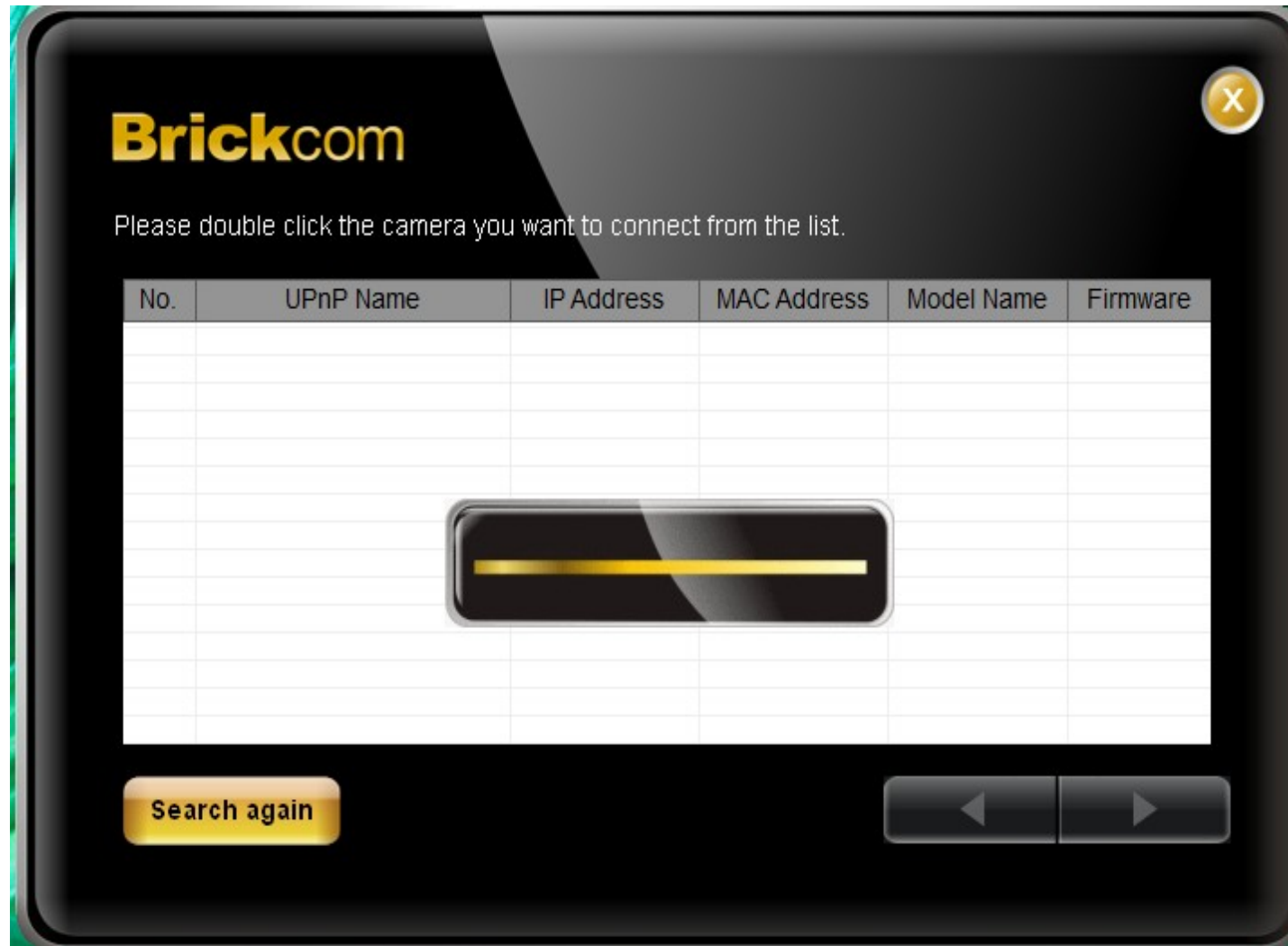
3. To obtain the network camera IP settings, users can either use simple mode or professional mode. Simple mode will automatically set up the network connection. This setting is recommended. With professional mode, the user will need to configure the IP address manually. Click the arrow to continue.

Note: If user selects simple mode, skip step seven.



Using EasyConfig

4. EasyConfig will begin to search for IP Camera devices on the network.



Using EasyConfig

5. When the device is found, select the desired target and click the arrow to continue. (If the target device was a plug-in, please wait 30 seconds for it to be detected.)



Select IP Address Settings (A)

7A. For selecting the IP address settings, the user has three options. If the user selects “Settings remain the same,” click the arrow to continue and proceed to step eight.



Select IP Address Settings (B)

7B. The user can also choose to select “Automatically obtain an IP Address (DHCP)”. This is the recommended setting. Select the option and click the arrow to continue. Proceed to step eight.



Select IP Address Settings (C)

7C. The user can also choose to select “Set IP Address configuration manually.” Select the option and click the arrow to continue. Proceed to next slide.



Select IP Address Settings (C) cont.

7Ci. Input the correct Network parameters. Click the arrow to continue.

Brickcom

Enter the Static IP Address to configure IP Camera.

IP Address	192 . 168 . 100 . 105
Subnet Mask	255 . 255 . 255 . 0
Gateway	192 . 168 . 100 . 1
DNS1	10 . 5 . 1 . 101
DNS2	10 . 5 . 1 . 103

Navigation buttons: Left arrow and Right arrow (highlighted).

Select IP Address Settings cont.

8. Note: The page will only be displayed if the camera is equipped with the EasyLink function. Proceed to step nine.

EasyLink allows users to view live feed from the camera via a domain name chosen by the user. When this screen appears, check the box to enable EasyLink. Enter a domain name and select a desired amount of time from the Refresh Time drop-down menu to confirm the connection status. Click the arrow to continue.

Brickcom

Easy Link Settings

You may use Easy Link Settings to connect to the IP camera without have IP bear in mind.

Enable

Domain Name: .mybrickcom.com

Refresh Time:

Using EasyConfig

9. When this screen is displayed, EasyConfig has successfully connected to the camera using the professional mode.



Contact Us

Brickcom Corporation Headquarters

Address	No.1 Jen Ai Rd, Hsinchu Industrial Park, Hukou, Hsinchu, Taiwan, R.O.C. 303
Tel	+886-3-5982022
Fax	+886-3-5982023
Website	http://www.brickcom.com
Sales & Marketing	info@brickcom.com
Support	support@brickcom.com

Brickcom, your best partner.

Thank You

